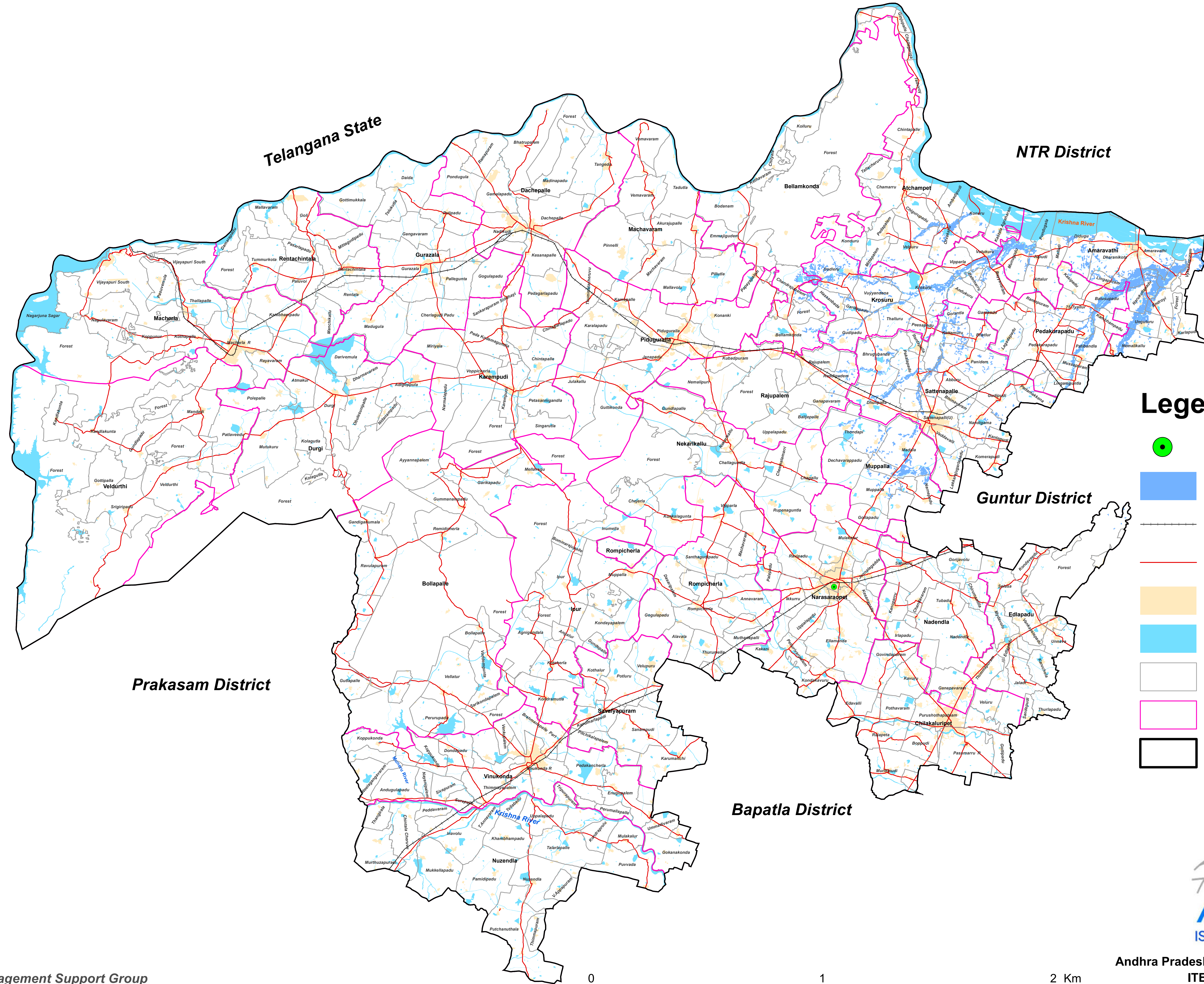


Rain Induced Flood Inundation Areas in Palnadu District, Andhra Pradesh

Based on the analysis of Sentinel-1A Satellite Image on 01.09.2024(06:00 Hrs IST)



Legend

- District Headquarter
- Flood Inundation
- Rail
- Road
- Builtup
- River/Waterbody
- Village Boundary
- Mandal Boundary
- District Boundary



Andhra Pradesh Space Applications Centre
ITE&C Department
Govt. of Andhra Pradesh

Source: Disaster Management Support Group
National Remote Sensing Centre, ISRO.

